

 Global
Heart Hub

Unite Summit

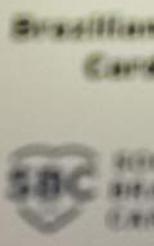
2023:

Early Detection
&
Diagnosis of CVD

November 8 - 9, 2023
Barcelona, Spain

Open Address

*Prof. Fausto J Pinto, MD, PhD, FESC, FACC, FEACVI, FASE, FSCAI
Immediate Past-President, WHF
Universidade de Lisboa, Portugal*



THE NUMBER 1 KILLER

**Cardiovascular disease (CVD)
is the world's biggest killer.**

**Most of premature deaths
from cardiovascular disease
could be avoided.**

18.6M

deaths per year

1 in 6

aged 15-49 die from
CVD

33%

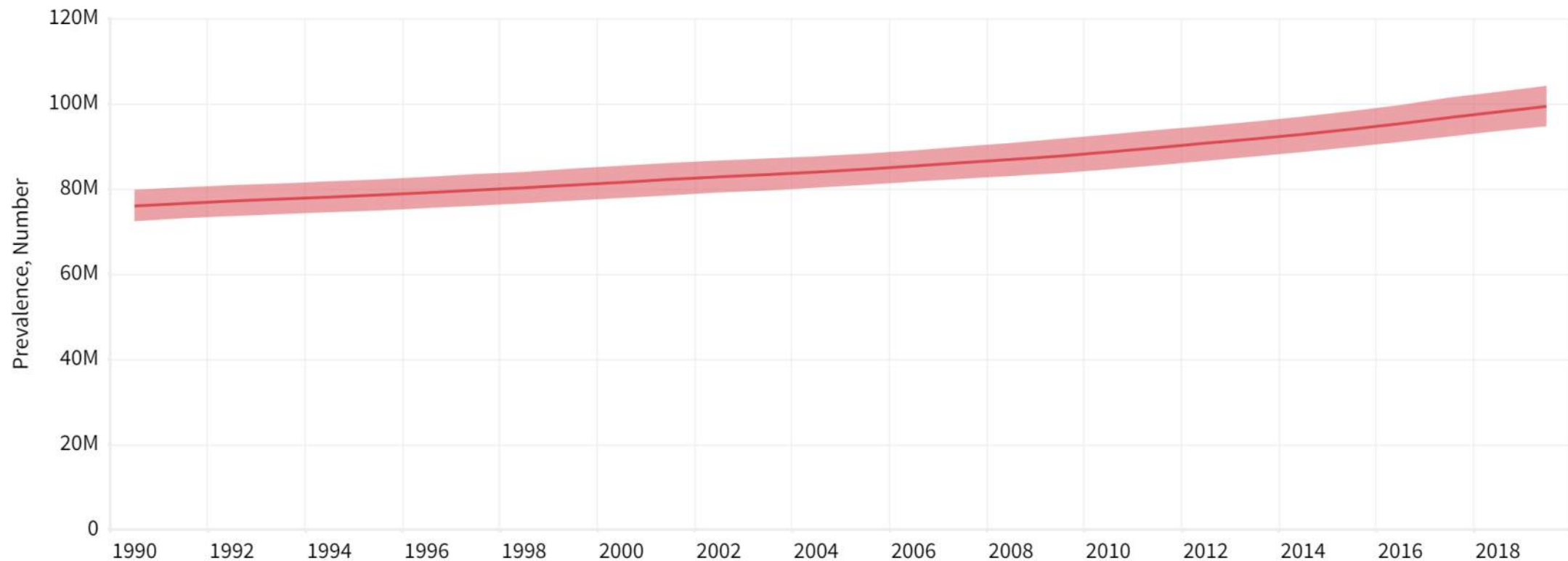
of all deaths are
from CVD



THE CHALLENGE: 100 million people living with CVD in Europe

Cardiovascular disease in Both Sexes, Prevalence Number, 1990 - 2019

European Region, All Ages

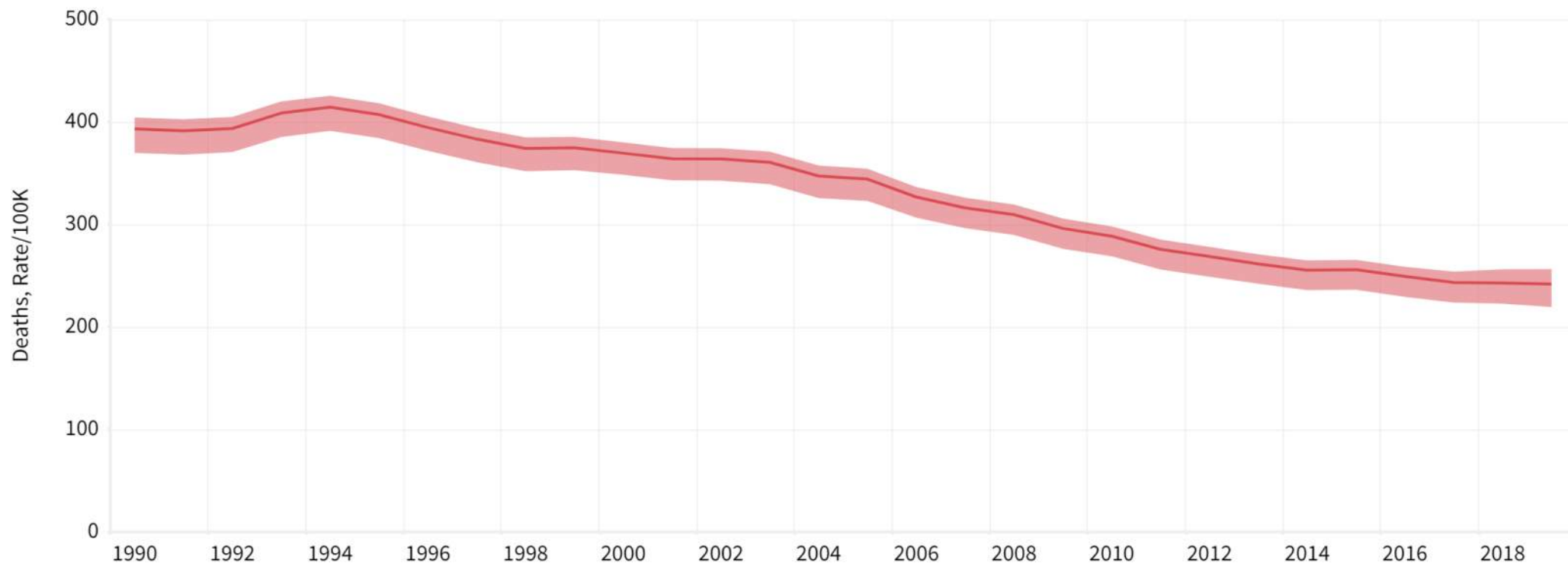


Source: [World Heart Observatory](#)

PROGRESS: FALLING AGE-STANDARDIZED DEATH RATES

Cardiovascular disease in Both Sexes, Deaths Rate/100K, 1990 - 2019

European Region, Age-standardized



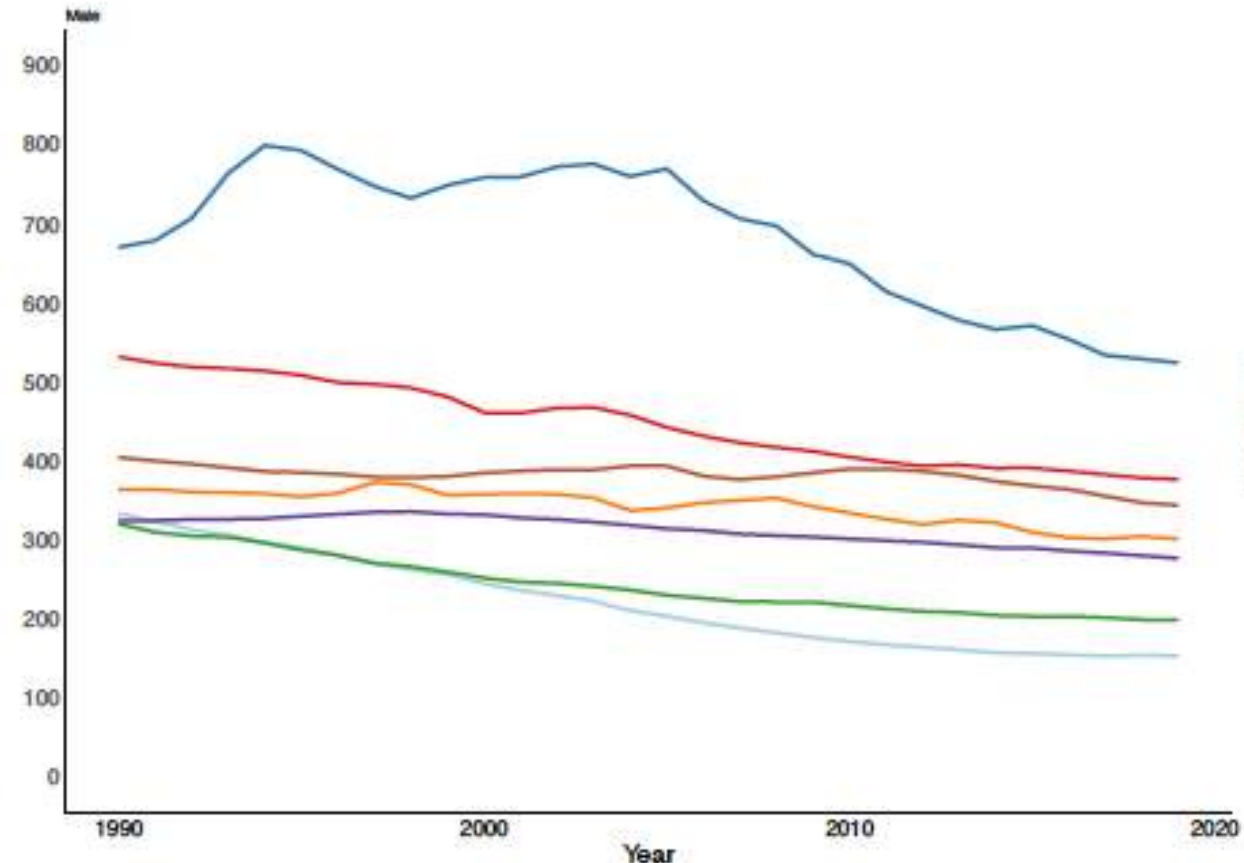
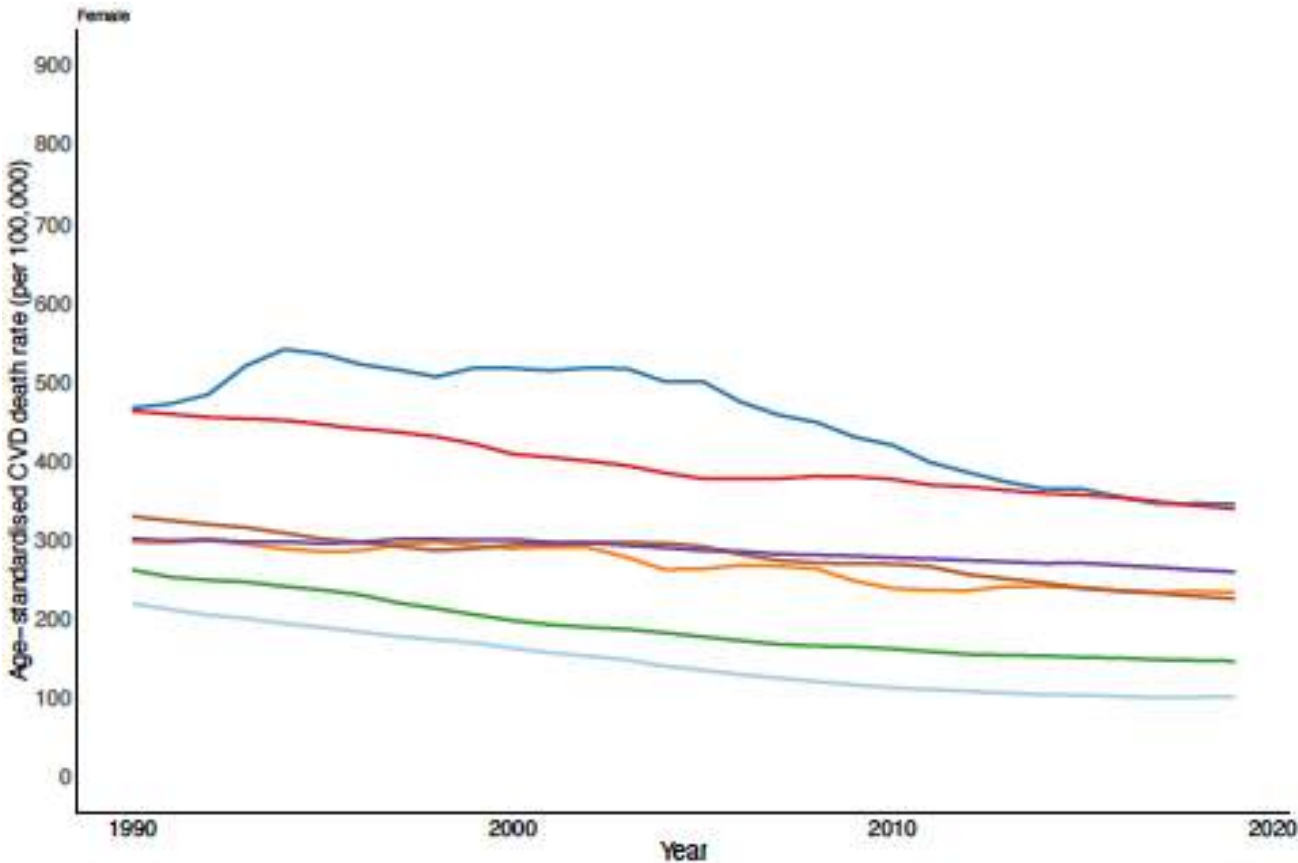
Source: Institute for Health Metrics and Evaluation (IHME). Used with permission. All rights reserved.

WorldHeartObservatory/trends

Source: [World Heart Observatory](https://www.who.int/world-heart-observatory)

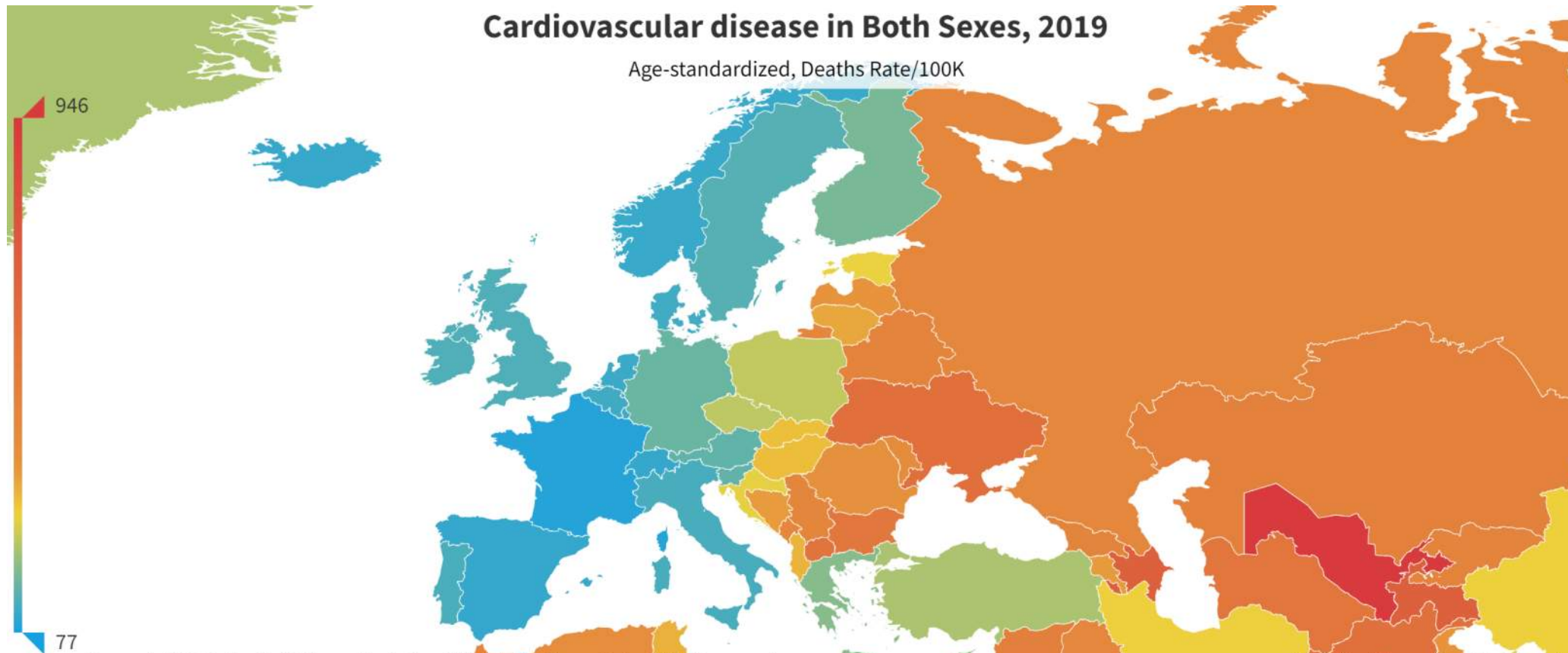


AGE-STANDARDIZED MORTALITY BY REGION



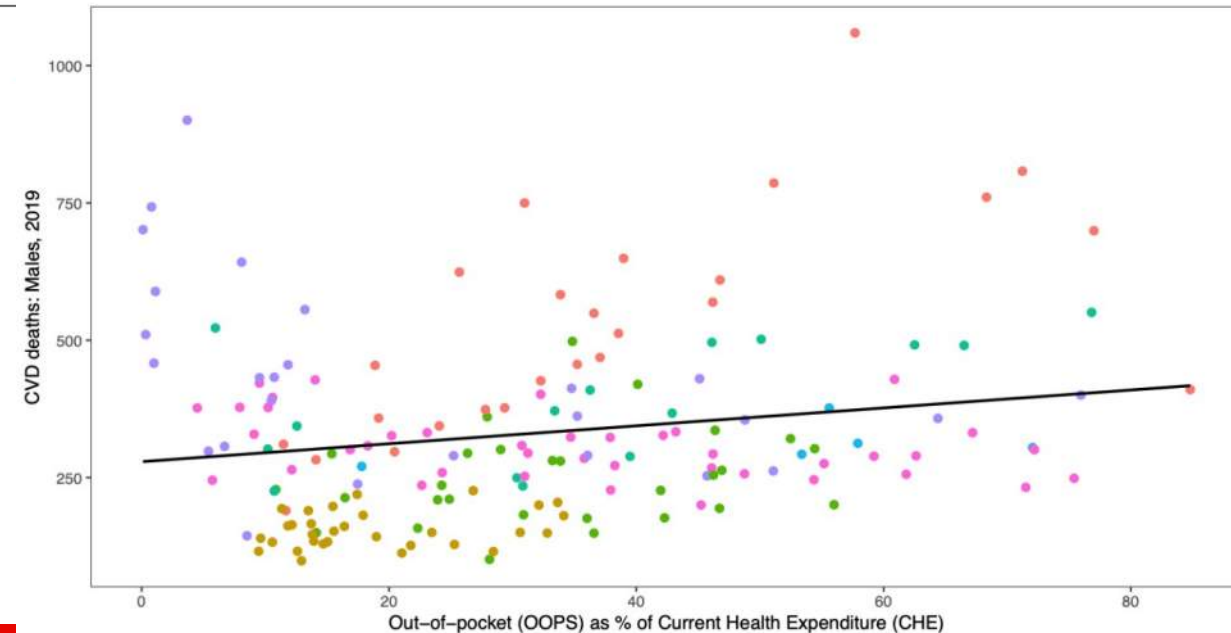
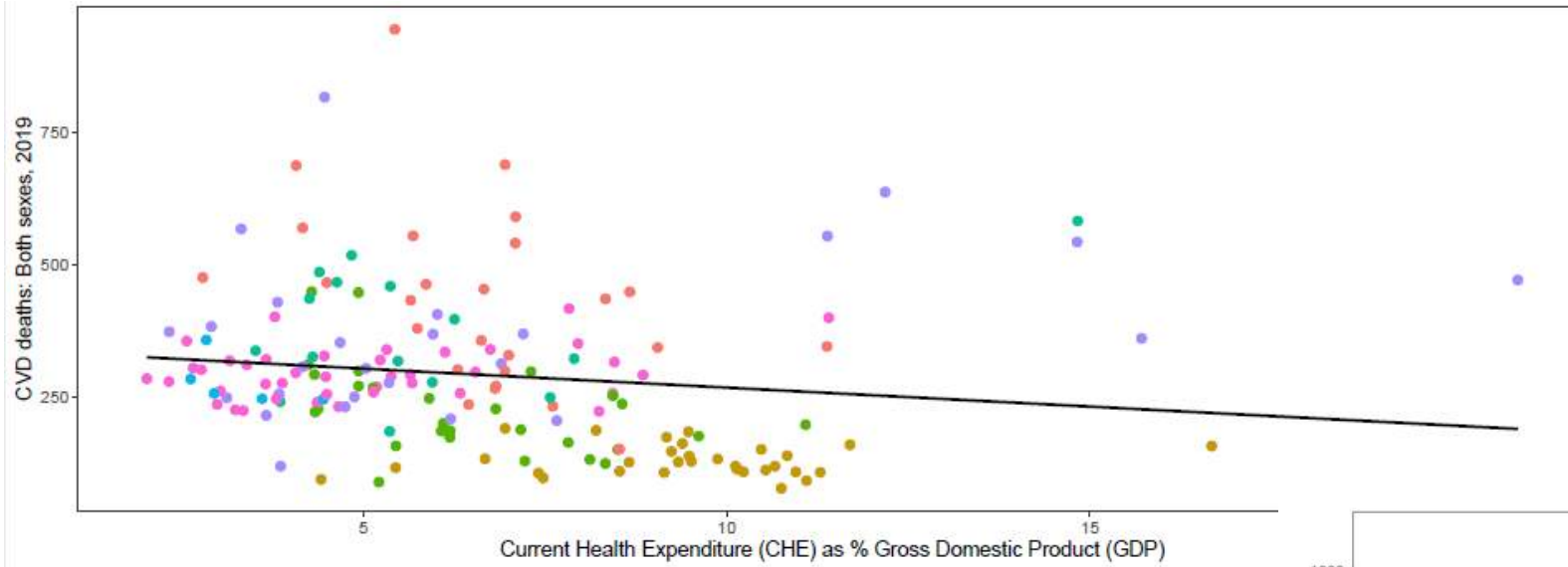
- Central Europe, Eastern Europe, and Central Asia
- High-income
- Latin America and Caribbean
- North Africa and Middle East
- South Asia
- Southeast Asia, East Asia, and Oceania
- Sub-Saharan Africa

REGIONAL INEQUALITIES: HIGHEST DEATH RATES IN EASTERN EUROPE



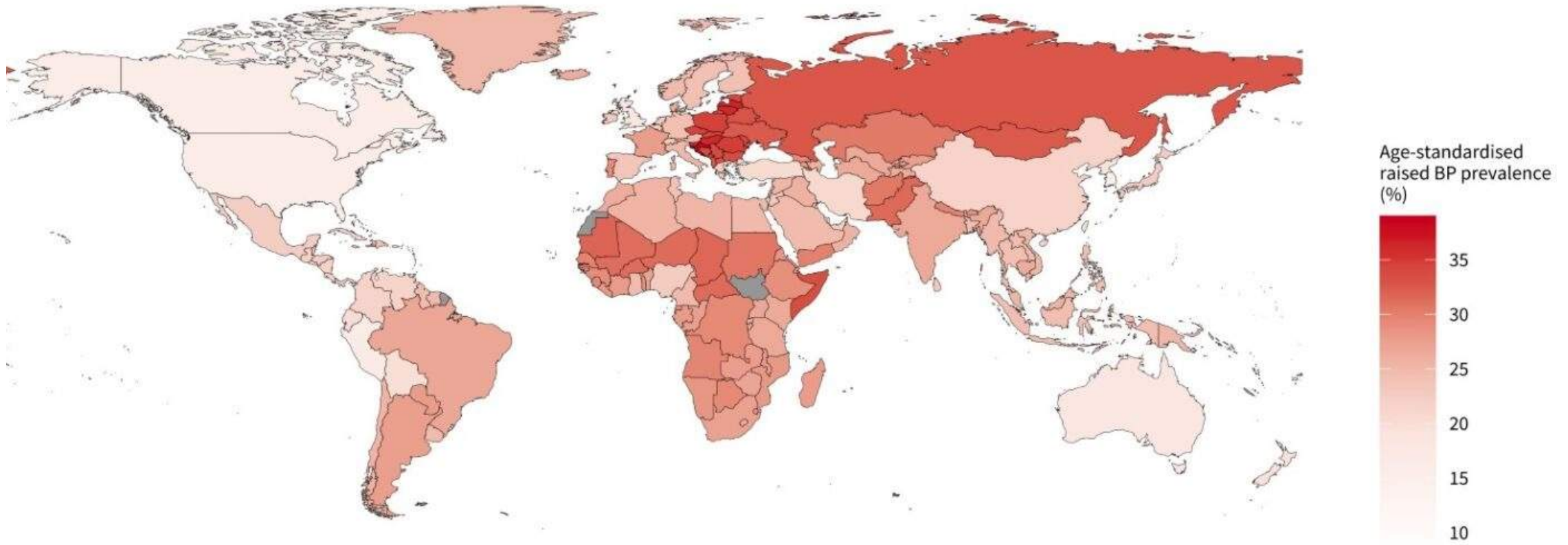
Source: [World Heart Observatory](#)

MORTALITY & HEALTH EXPENDITURE – OVERALL AND OOP



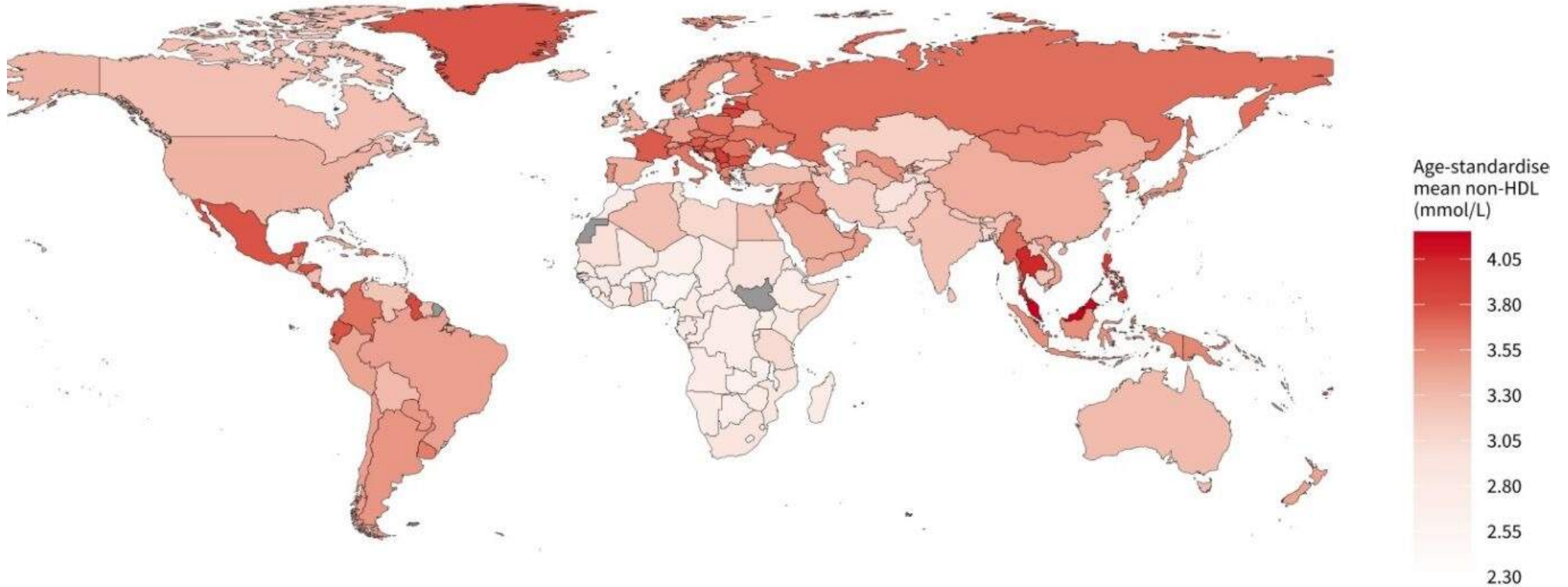
- Central Europe, Eastern Europe, and Central Asia
- Latin America and Caribbean
- South Asia
- Sub-Saharan Africa
- High...income
- North Africa and Middle East
- Southeast Asia, East Asia, and Oceania

Comparatively high CVD Risk Factors in Europe: raised blood pressure in men in Central and Eastern Europe



Source: [World Heart Report 2023: Confronting the World's Number One Killer](#)

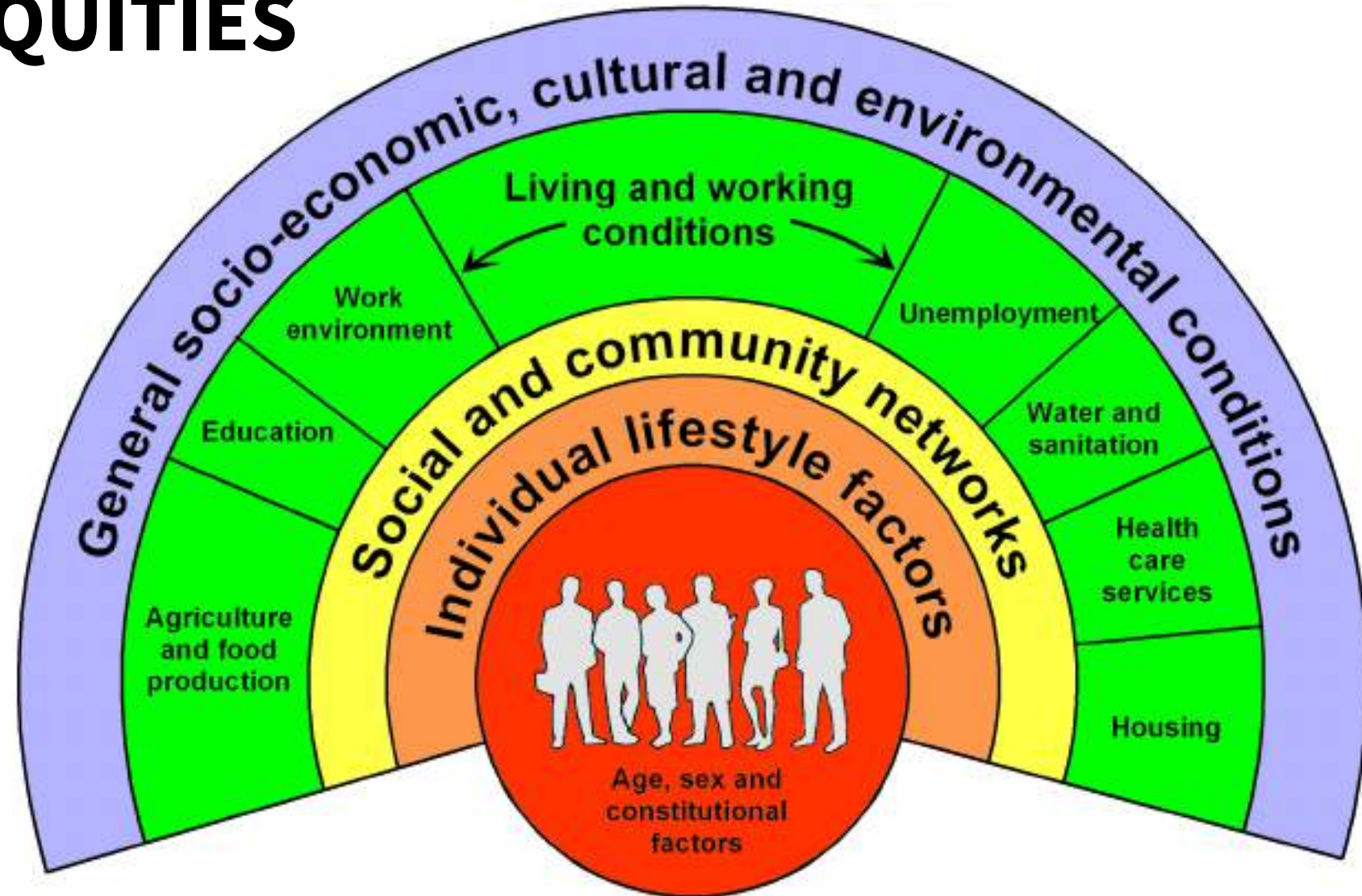
Comparatively high CVD Risk Factors in Europe: non-HDL cholesterol in men



Source: [World Heart Report 2023: Confronting the World's Number One Killer](#)

SOCIAL DETERMINANTS OF HEALTH – DRIVERS OF HEALTH INEQUITIES

- Key determinants include **age, sex, education** and **socioeconomic position**
- General environmental conditions are determined by both national and international policies – inequities can be **within** and **between** countries.

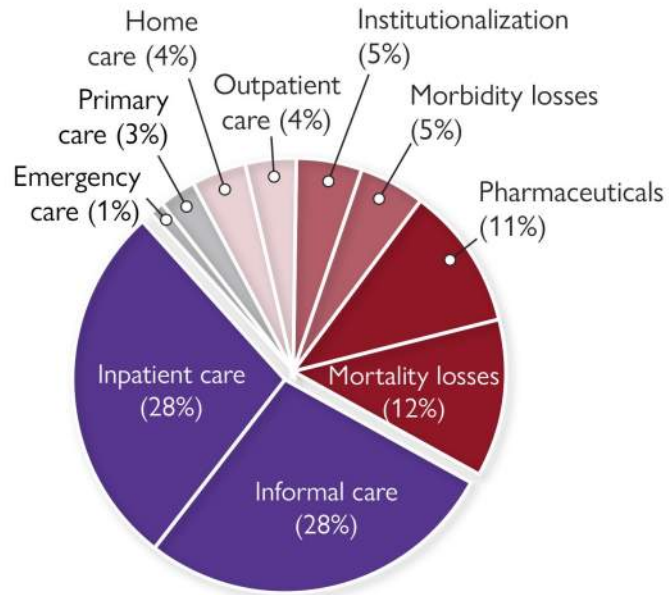


Source: Dahlgren and Whitehead, 1991

Cardiovascular disease costs €282 billion annually across the 27 European Union countries, representing a cost of €630 per EU citizen

Economic burden of cardiovascular diseases (CVD) in 27 European Union countries is €282 billion annually

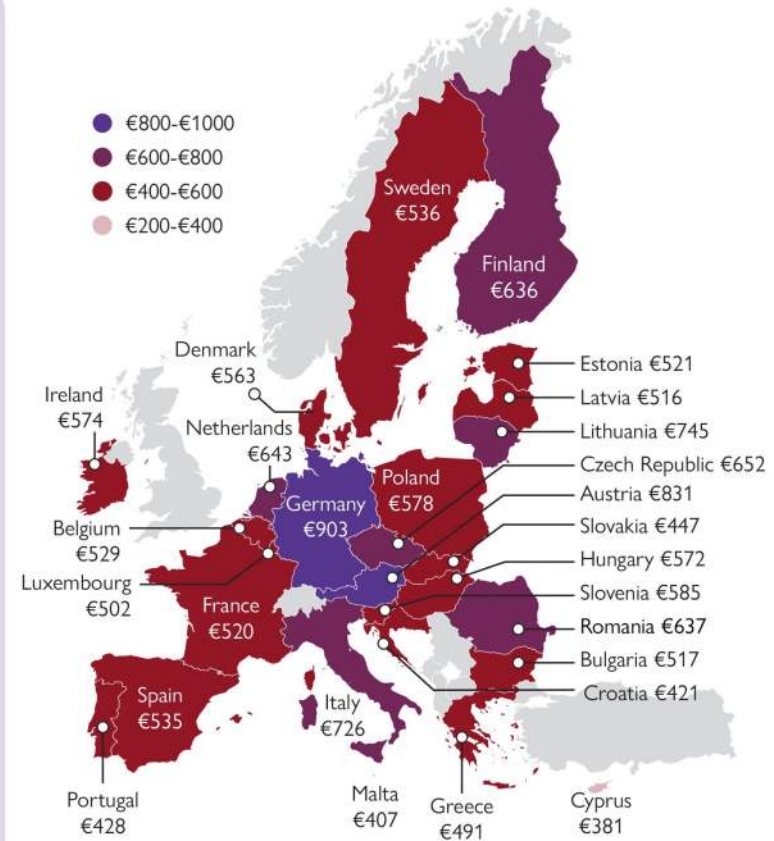
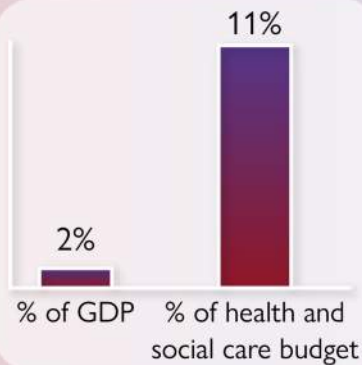
Costs by categories



Coronary heart disease:
€77 Billion (27%)

Cerebrovascular disease:
€76 Billion (27%)

€630 per capita across EU
(ppp-adjusted)





WORLD HEART FEDERATION

WHF is an **umbrella organization** representing the **global cardiovascular community**

- **Societies**
- **Foundations**
- **Patient groups**

with the vision of
Cardiovascular health for everyone

MISSION

Connect and lead the CVD community
Translate science into policy
Stimulate and catalyse the exchange of knowledge

WHF STRATEGIC GOALS

1

Become the recognized and credible reference for global cardiovascular health.



2

Promote and support cardiovascular prevention and control at global level, with other coalitions such as GCCH and NCDA, through the development of advocacy and communications strategies towards the implementation of SDG 3.4.



3

Mobilise and strengthen the capacity of WHF Members to complement, support and add value to national policies towards the reduction of CVD premature mortality by 33% by 2030.

4

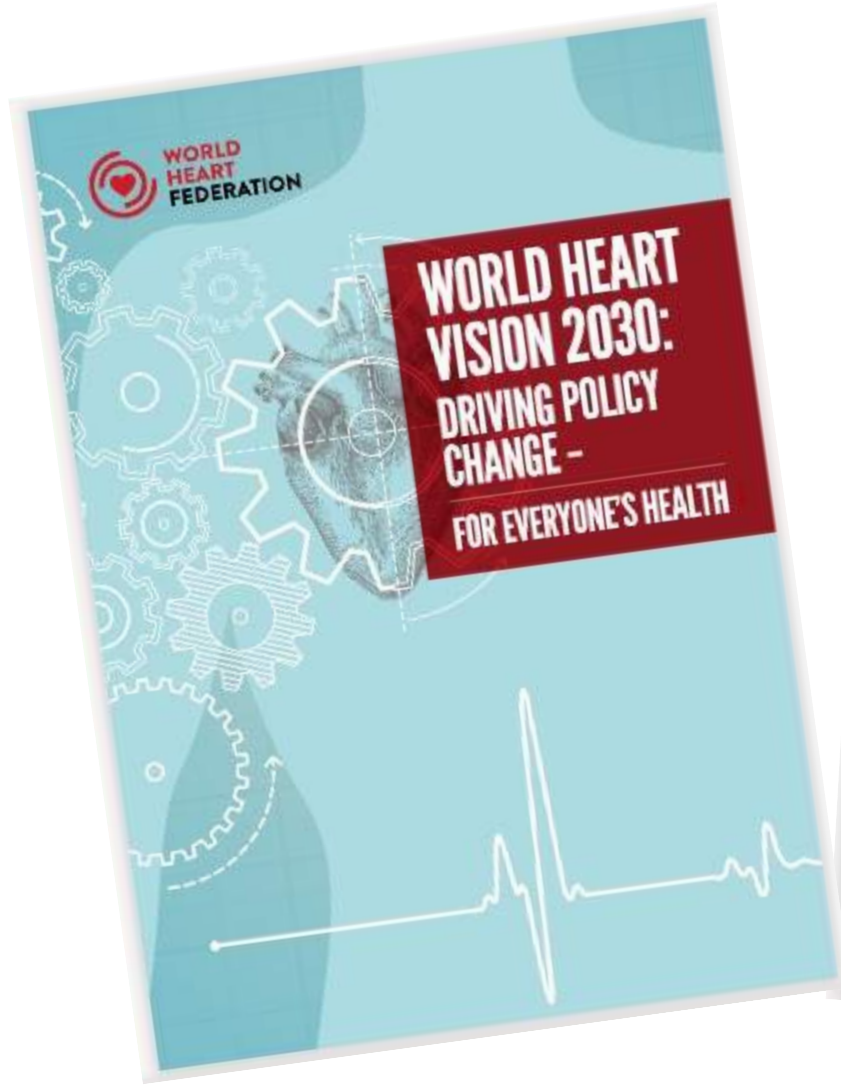
Strengthen organizational growth, membership, transparency and sustainability to enable WHF to achieve its mission.



IMPACT

As a convening organization we will contribute to support UN SDG 3.4
– Reduce by 33% premature mortality by CVD by 2030.

WORLD HEART Vision 2030



WORLD HEART FEDERATION

OUR MAIN ACTIVITIES



ROADMAPS



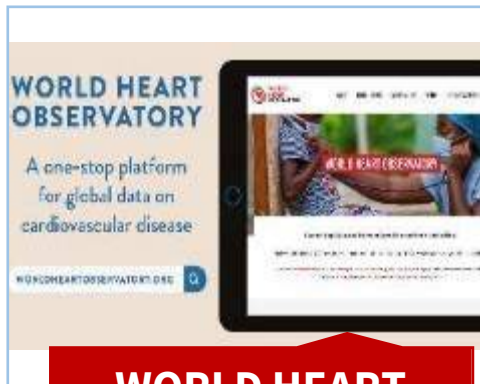
ROUNDTABLES



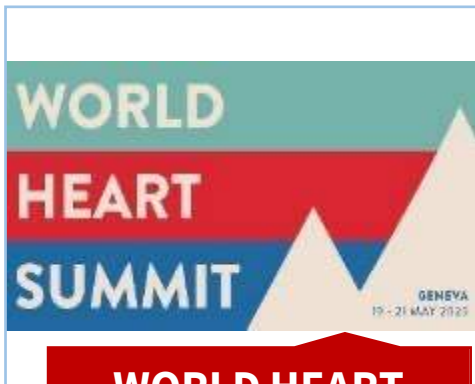
EMERGING LEADERS



WORLD HEART DAY



WORLD HEART OBSERVATORY



WORLD HEART SUMMIT

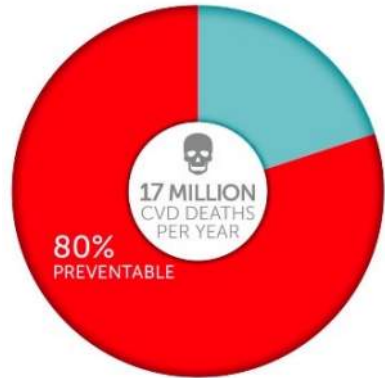


WORLD CONGRESS ON RHD



COLOURS TO SAVE HEARTS

WHF ROADMAPS RATIONALE



**CVD main cause
of death and
disability**



**We know the
causes**



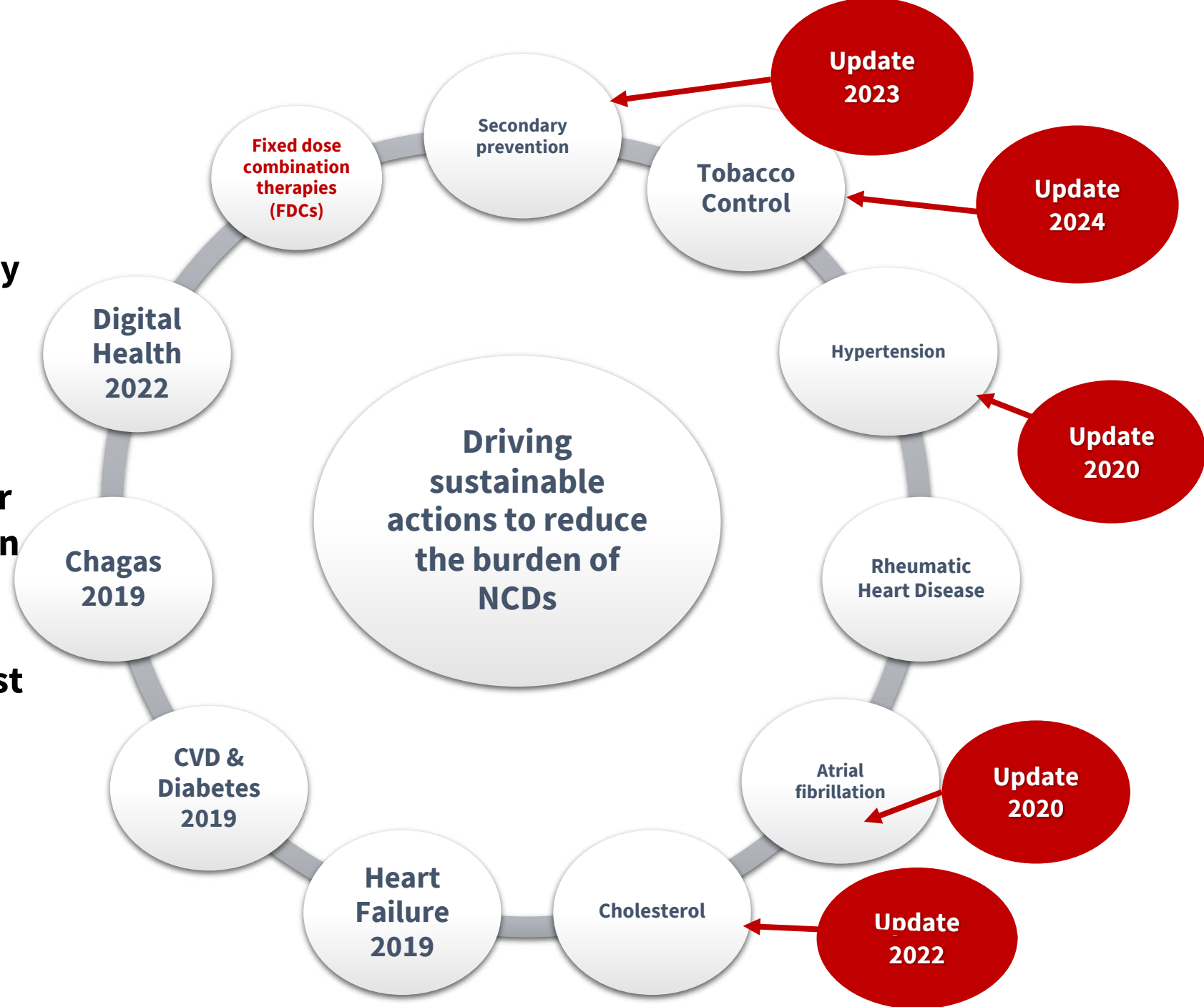
**We do have cost-
effective
treatments**



**There is a large
evidence-
practice gap**

WHF ROADMAPS

- **Global frameworks informed by evidence , health system and policy approaches, oriented towards action**
- **Assist leaders in cardiovascular health to assess needs & gaps in their communities**
- **Identify roadblocks and suggest evidence-based solutions that could be relevant in different contexts**



CONSENSUS ON ATTR-CM

WHF assembled a panel of 20 expert experts from 13 countries specialized in Transthyretin amyloid cardiomyopathy (ATTR-CM) to develop a consensus paper on ATTR-CM.

The document is focused on cardiac involvement, available tools for early diagnosis and optimal patient management.



**WORLD
HEART
FEDERATION**

**WORLD HEART
FEDERATION
POLICY SUMMARY
OF THE WHF
CONSENSUS ON
TRANSTHYRETIN
AMYLOIDOSIS
CARDIOMYOPATHY
(ATTR-CM)**

**A WORLD
HEART FEDERATION
POLICY SUMMARY**



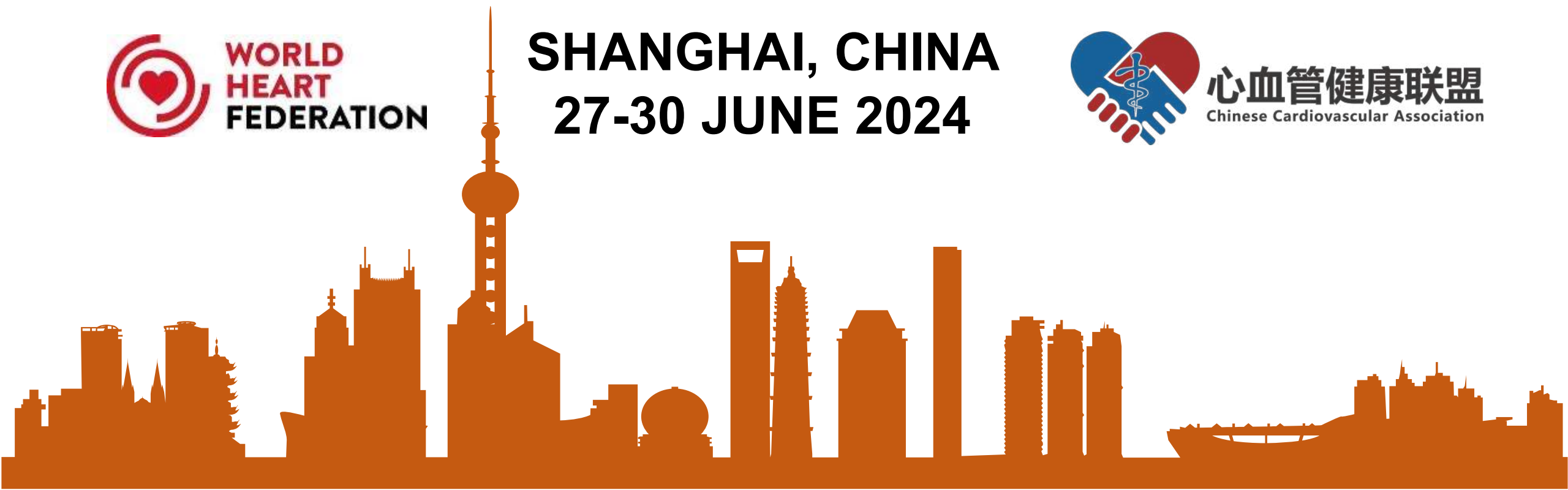
WCC 24 TOGETHER WITH ORIENTAL CONGRESS OF CARDIOLOGY



SHANGHAI, CHINA
27-30 JUNE 2024



心血管健康联盟
Chinese Cardiovascular Association





Thank you
www.worldheart.org

