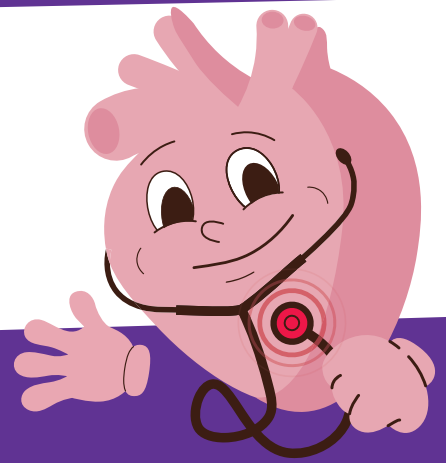


# What is Heart Valve Disease?



Heart Valve Disease occurs when one or more of our heart valves don't open or close properly.

Though it typically occurs later in life, it can affect younger people too.



**1 in 8 people over 75** suffer from moderate to severe Heart Valve Disease.

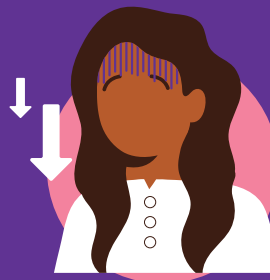
## Symptoms Include:



Dizziness



Breathlessness



Fatigue

... but some people have no symptoms at all.

As with any heart condition there are potential complications, including:



Heart Failure



Heart rhythm problems



In severe cases, death

Although women make up **47%** of those diagnosed with Heart Valve Disease, they're still frequently overlooked. Their symptoms are often more subtle, making diagnosis more difficult.

Detecting Heart Valve Disease starts with a simple, painless stethoscope check. So if you think you might be at risk... ***book a simple stethoscope check with your doctor today!***

**Listen to  
your heart**